

## 1. TITLE OF THE CERTIFICATE (ES)

**Certificado de Profesionalidad de nivel 2 en  
EOCB0310 REVESTIMIENTOS CON PIEZAS RÍGIDAS POR ADHERENCIA EN CONSTRUCCIÓN**

## 2. TRANSLATED TITLE OF THE CERTIFICATE (EN)

**Professional Certificate Level 2 in  
EOCB0310 GLUED RIGID CLADDING IN CONSTRUCTION  
(This translation has no legal status)**

## 3. PROFILE OF SKILLS AND COMPETENCES

The holder of this certificate will have acquired the **general competence** to organise and execute rigid cladding work such as tiled flooring, wall tiling, and ceramic tiles and pieces, pieces of natural or artificial stone, glass and other materials, using direct gluing techniques or combined with mechanical fixing, and carrying out the screed needed for both conventional and special applications, following the guidelines specified in the technical documentation and the indications of a superior or foreman, in accordance with the rules established on health and safety and quality and collaborating on risk control within the holder's professional area. This general competence is divided into the following **skills units** (UC):

- Prepare pastes, mortars, adhesive and concrete (UC0869\_1).
- Make good and prepare walls for screeding in construction (UC0871\_1).
- Prepare pieces and treat surfaces with rigid cladding (UC1320\_1).
- Screed surfaces in construction (UC1938\_2).
- Lay tiles and plates (UC1942\_2).
- Lay flooring with rigid pieces (UC1943\_2).
- Organise mixed screed and rigid modular floor work in construction (UC1941\_2).
- Control risks in construction at a basic level (UC1360\_2).

The professional skills are acquired through the **learning outcomes** defined within the related Training Modules (MF):

- Pastes, mortars, adhesives and concrete (MF0869\_1).
- Treatment of support for screeding in construction (MF0871\_1).
- Auxiliary treatments in cladding with rigid pieces (MF1320\_1).
- Screed surfaces in construction (MF1938\_2).
- Tiles and plates (MF1942\_2).
- Flooring with rigid pieces (MF1943\_2).
- Organisation of screed and rigid modular cladding in construction. (MF1941\_2).
- Basic prevention of occupational risks in construction (MF1360\_2).
- Practical training at the workplace in Glued rigid cladding in construction (MP0337)

(See legal basis for all learning outcomes information acquired by the holder of this Certificate in each MF).

As a reference the learning outcomes include in the Practical training at the workplace that complete and reinforce the learning outcomes acquired in the other training modules, are:

- Prepare work with mortars, pastes, adhesive and joint materials, following instructions for preparation and complying with the consistency and resistance indicated.
- Apply preparation and cleaning techniques in limited areas on surfaces for later screeding, in the conditions of quality and health and safety established by different methods.
- Apply a preparatory treatment using rough primers and bindings to irregular and degraded masonry, following the instructions received and respecting any structural joints.
- Prepare surface for screed or cladding with rigid pieces.
- Apply screed on the surface for subsequent cladding, on walls, floors and ceilings, following the instructions received.
- Apply techniques for laying tiling on a surface in specific job, following the instructions received.
- Apply techniques for laying flooring in a specific job following the instructions received.
- Apply installation techniques for auxiliary and collective protection resources normally used in screeding and laying tiles, cladding and flooring with rigid pieces, collaborating on their installation and correcting any deficiencies found in those already installed, while complying with specific health and safety measures.

### 3. PROFILE OF SKILLS AND COMPETENCES

- Organise, measure and assess the screed work, tiling, cladding and flooring with rigid pieces, taking into account the capacity of the workers on the team, and coordinating with related trades.
- Take part in the company's working processes, following the rules and instructions established at the workplace.

### 4. RANGE OF OCCUPATIONS ACCESSIBLE TO THE HOLDER OF THIS CERTIFICATE

The holder of this certificate may work in the construction sector, mainly in the building of new constructions and restoration. The most pertinent occupations and positions are:

- Floor/tiling layer, in general.
- Construction stonemason.
- Foreman and/or supervisor of floor and wall tilers.

The holder of this professional certificate has recognition of the basic level training in labour risk prevention, according to Annex IV of the Royal Decree 39/1997 of 17 of January approving the Labour Risks Prevention Act.

### 5. OFFICIAL BASIS OF THE CERTIFICATE

#### Name and status of the national/regional authority providing accreditation/recognition of the certificate

The Ministry of Employment and Social Security or the corresponding autonomous regional administration within the scope of its competence, in the name of the King. The certificate is valid throughout Spain.

#### Level of the certificate

The Professional Certificate Level 2 of the National Repertoire of Professional Certificates corresponds to level 3 of the International Standard Classification of Education (ISCED-P 2011).

The European Qualification Framework (EQF) level:

#### Grading scale/Pass requirements

The grading scale and pass level of the training modules are expressed on a scale of 0 to 10. The minimum score for a pass is 5 in every training module including a pass in the practical training at the workplace module.

The grading system is as follows:

- FAIL: 0 to 4.9
- PASS-SATISFACTORY: 5 to 6.9
- PASS-GOOD: 7 to 8.9
- PASS-EXCELLENT: 9 to 10

#### Access to next level of education/training

This Professional Certificate Level 2 gives access to Professional Certificate Level 3 within the same professional area and family.

For validation purposes, the educational authorities will recognise the professional module or modules of the VET diplomas corresponding to the skills units included in the training modules of this certificate.

#### Legal basis

Royal Decree 615/2013 of 2 August, establishing twelve professional certificates in the professional family Construction and Civil Work, which are included in the National Repertoire of Professional Certificates, and updating the professional certificate established as Appendix I of Royal Decree 1966/2008 of 28 November, and the professional certificates established as Appendices I, II and III of Royal Decree 1212/2009 of 17 July and as Appendices I, II and II of Royal Decree 644/2011 of 9 May. (Appendix IV, Code: EOCB0310)

## 6. OFFICIALLY RECOGNISED WAYS OF ACQUIRING THE CERTIFICATE

This certificate may be acquired by:

1. Training: Completion with a pass grade of the face-to-face or online training programme.
2. Recognition of the professional skills acquired through professional experience or non-formal training (prior learning): Completion of a process of skills evaluation and accreditation in all the skills units making up the professional certificate.
3. Dual training: Completion of a training and apprenticeship contract, which may range from 1 year (or 6 months, if stipulated as such in the collective agreement) to 3 years, during which effective working time is combined with time dedicated to training under the training programme for the professional certificate.

The training method (number 1 above) requires successful completion of the training modules and the practical training at the workplace:

Description of vocational training received	Percentage of total programme (%)	Duration (hours)
Training modules	89	670
Practical training at the workplace	11	80
<b>Total duration of training leading to the certificate</b>		<b>750</b>

### Entry/access requirements:

- Compulsory Secondary Education Diploma (Lower secondary education); or
- Professional Certificate Level 1 in the same professional area.
- If neither of the above or higher certifications are held, a pass in the key skills tests.

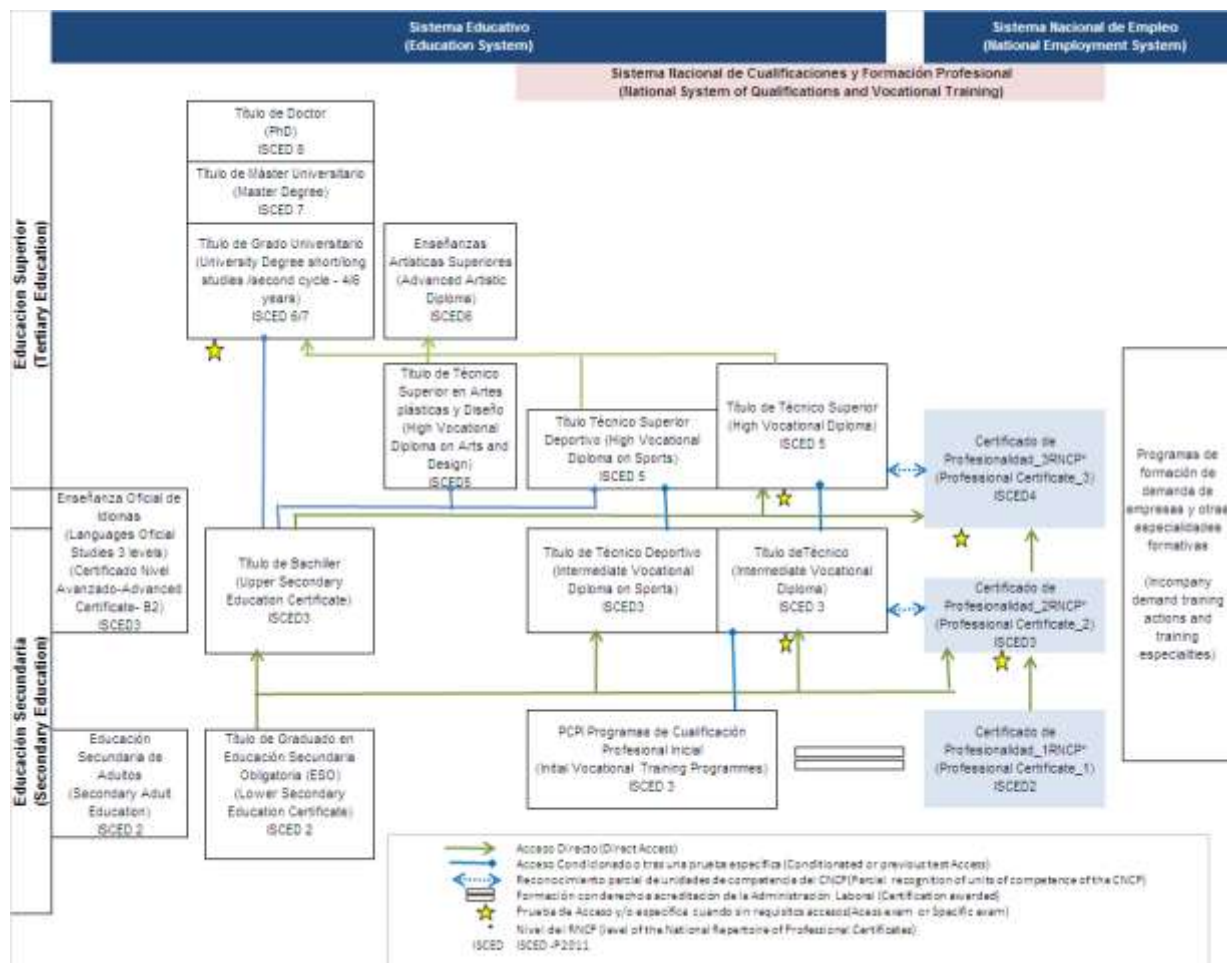
**Additional information:** Professional certificates are instruments for official accreditation of the professional qualifications in the National Catalogue of Professional Qualifications for all economic activities, within the scope of the labour administration. The National Repertoire of Professional Certificates is divided into three qualification levels (Level 1, Level 2 and Level 3), and by sectors into 26 professional families and 102 professional areas. More information is available at: [www.sepe.es](http://www.sepe.es)

National Europass Centre: [www.oapee.es](http://www.oapee.es)

(\*) **Explanatory note:** This document is designed to provide additional information about the specified certificate, but has no legal status in itself. The format of the description is based on the following texts: Council Resolution 93/C 49/01 of 3 December 1992 on the transparency of qualifications; Council Resolution 96/C 224/04 of 15 July 1996 on the transparency of vocational training certificates; and Recommendation 2001/613/EC of the European Parliament and of the Council of 10 July 2001 on mobility within the Community for students, persons undergoing training, volunteers, teachers and trainers.

More information is available at: <http://europass.cedefop.eu.int>

## Information on Professional Certificates of the Map of Qualifications and Vocational Training in Spain



Acceso Directo (Direct Access)  
 Acceso Condicionado tras una prueba específica (Conditioned or previous test Access)  
 Reconocimiento parcial de unidades de competencia del CNCF (Partial recognition of units of competence of the CNCF)  
 Formación con derecho a acreditación de la Administración Laboral (Certificat on awarded)  
 Prueba de Acceso y/o específica cuando sin requisitos de acceso (Access exam or specific exam)  
 Nivel del RNCP (level of the National Register of Professional Certificates)  
 ISCED -ISCED -P2011